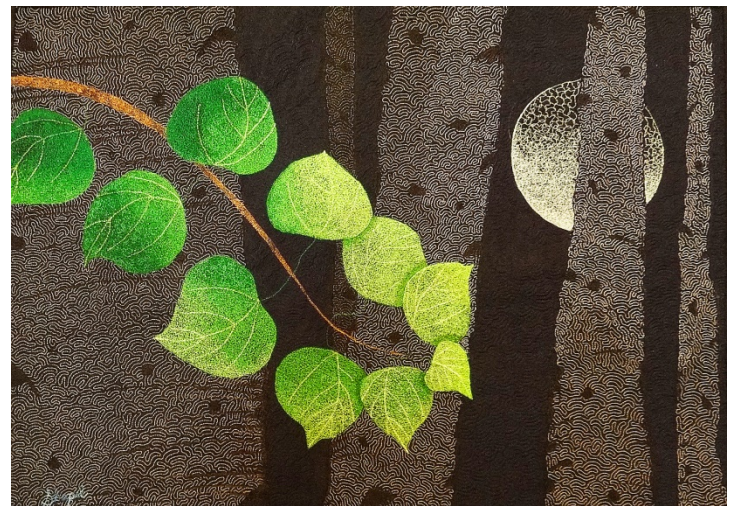


Thread Painting: Aspen

by Barbara Shapel

This class is intended for the person who is comfortable with their quilting but would like to take it to the next level. Topics to be covered include what thread to use and when, machine needles, and the order of quilting. We will also discuss how to make the piece two-sided.



Supplies:

- \$10 Kit fee for custom stencil
- Sewing Machine in good working order (a must!)
- Extension table for your sewing machine (if you have one)
- Walking Foot that fits your sewing machine
- Darning or free motion quilting foot that fits your sewing machine. (I prefer one that doesn't block your view to the needle.)
- Round machine embroidery hoop for use with your sewing machine (approx. 8" in diameter and thin enough to get under your sewing machine foot without having to take the foot off)
- One quilt sandwich:
 - 22" wide x 16" high in size
 - Please use solid or tone-on-tone fabric for both the front and back of the sandwich, however the fabrics don't need to be the same on both sides (think daytime/nighttime views).
 - Please use a thin batting (I like Hobbs Heirloom 80% cotton/20% polyester).
 - Please use quilt basting spray when putting the layers together.
 - Please do NOT use safety pins in the middle of the sandwich (around the outside perimeter is ok).
- Sewing machine needles:
 - Sharps 60/8 (if you're stitching with invisible thread)
 - Jeans/Denim 70/10 and 80/12
- Marking pencil that you can see on your fabric
- Bobbin for **each** thread color you bring
- Rayon/polyester – **or** - cotton thread in the following colors:
 - White and black thread
 - Several shades of very light to medium grey.
 - A few shades of dark grey to almost black.

- Light, medium, and dark green for leaves
- Invisible thread for background quilting (I prefer Madeira Monofil, Number 60).
Note: If you're not using invisible thread, bring thread that matches your fabric for background quilting.

- Optional: Digital Camera for taking pictures
- Optional: Paper for taking notes
- Optional: Small, practice quilt sandwich for testing stitches and tension on

*Questions? Please contact me at
Barbara@BarbaraShapel.com or call 360 606-9608
I look forward to working with you in class!*